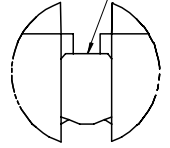
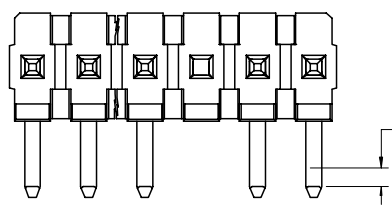


CIRCUIT	A	B
2	6.78/7.87 .267/.310	3.96 .156
3	10.74/11.84 .423/.466	7.92 .312
4	14.71/15.80 .579/.622	11.89 .468
5	18.67/19.76 .735/.778	15.85 .624
6	22.63/23.72 .891/.934	19.81 .780
7	26.59/27.69 1.047/1.090	23.77 .936
8	30.56/31.65 1.203/1.246	27.74 1.092
9	34.52/35.61 1.359/1.402	31.70 1.248
10	38.48/39.57 1.515/1.558	35.66 1.404
11	42.44/43.54 1.671/1.714	39.62 1.560
12	46.41/47.50 1.827/1.870	43.59 1.716
13	50.37/51.46 1.983/2.026	47.55 1.872
14	54.33/55.42 2.139/2.182	51.51 2.028
15	58.29/59.39 2.295/2.338	55.47 2.184
16	62.26/63.35 2.451/2.494	59.44 2.340
17	66.22/67.31 2.607/2.650	63.40 2.496
18	70.18/71.27 2.763/2.806	67.36 2.652
19	74.14/75.23 2.919/2.962	71.32 2.808
20	78.11/79.20 3.075/3.118	75.29 2.964
21	82.07/83.16 3.231/3.274	79.25 3.120
22	86.03/87.12 3.387/3.430	83.21 3.276
23	89.94/91.08 3.541/3.586	87.17 3.432
24	93.85/95.00 3.695/3.740	91.14 3.588

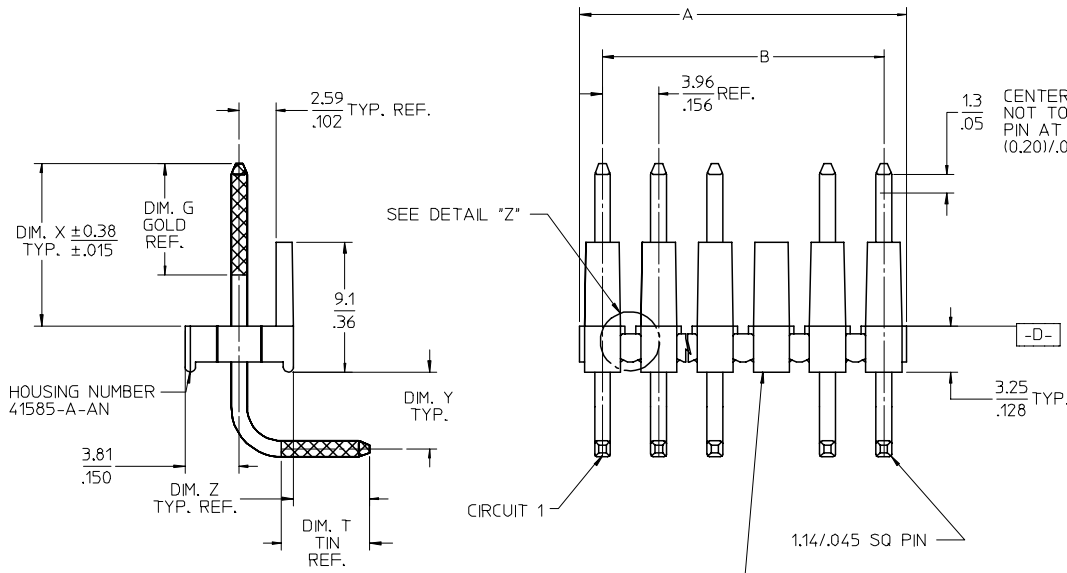
SPACING TAB
SEE NOTE # 6



DETAIL "Z"
SCALE 10:1



1.3
.05 CENTERLINE OF PIN IN AREA SHOWN NOT TO VARY FROM CENTERLINE OF PIN AT DATUM -D- BY MORE THAN (0.13)/.005 IN ANY DIRECTION.



1.3
.05 CENTERLINE OF PIN IN AREA SHOWN NOT TO VARY FROM CENTERLINE OF PIN AT DATUM -D- BY MORE THAN (0.20)/.008 IN ANY DIRECTION.

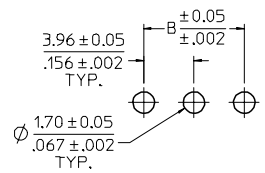
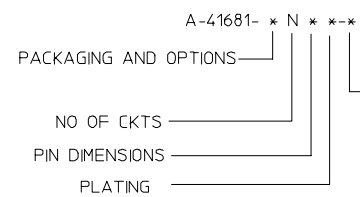
HOUSING NUMBER
41585-A-AN

CIRCUIT 1

1.14/.045 SQ PIN

OPTIONAL VOIDED CKT.
SEE CHART FOR LOCATIONS

- NOTES:
- MATERIAL: GLASS FILLED POLYESTER, 94V-0, MOLDED BLACK
 - FINISH: (102) OVERALL TIN: (0.00508)/.000200 MIN. OVER COPPER UNDERPLATE: (0.00254)/.000100 MIN. (122) OVERALL TIN: (0.00381)/.000150 MIN. OVER NICKEL UNDERPLATE: (0.00076)/.000030 MIN. (208) SELECT GOLD: (0.00038)/.000015 MIN. *SELECT TIN: (0.00254)/.000100 MIN. OVERALL NICKEL UNDERPLATE: (0.00127)/.000050 MIN. (228) SELECT GOLD: (0.00076)/.000030 MIN. *SELECT TIN: (0.00254)/.000100 MIN. OVERALL NICKEL UNDERPLATE: (0.00127)/.000050 MIN. (501) OVERALL GOLD: (0.00051)/.000020 MIN. OVER NICKEL PLATE: (0.00076)/.000030 MIN.
 - *THE PRIMARY SHIPPING CARTON WILL BE LABELED "COMPLIANT TO RoHS DIRECTIVE 2002/95/EC AND ELV ANNEX II OF DIRECTIVE 2000/53/EC". CARTONS WITHOUT THIS LABEL MAY CONTAIN PRODUCT WITH TIN/LEAD PLATINGS.
 - PRODUCT SPECIFICATION: PS-08-50
 - PACKAGING SPECIFICATION: SEE CHARTS
 - PIN PUSH OUT FORCE: PRIOR TO SOLDERING, A 3 LB MINIMUM FORCE (IN EITHER DIRECTION) SHALL BE REQUIRED TO PUSH THE PIN OUT OF THE HEADER. PARTS ARE STACKABLE END TO END ON (3.96)/.156 CENTERS. (SPACING TABS MUST BE REMOVED ON CIRCUIT SIZES 1 THROUGH 23 BEFORE PARTS ARE STACKABLE.)
 - SOLDERABILITY: WHEN PARTS ARE SOLDERED AT A TEMPERATURE OF (230°C) OR 446°F FOR 5 SECONDS, EACH SOLDERED SURFACE SHALL BE A MINIMUM OF 95% COVERED WITH A SMOOTH CONTINUOUS ADHERENT COATING. FOR OTHER INFORMATION SEE SMES-152.
 - THIS PART CONFORMS TO CLASS B REQUIREMENTS OF COSMETIC SPECIFICATION PS-45499-002.



PCB LAYOUT: COMPONENT SIDE
RECOMMENDED PCB THICKNESS:
(1.57 ± 0.18)/.062 ± .007

2-*	AF1
1	AF1
SHT.	REV.

ADD P/N 41682-0153 EC NO: UCP2007-2134 DRAWN BY: 2007/02/22 CHFKD:LSHMI DT 2007/03/05 APPR:FSM TH REV: AF1	QUALITY SYMBOLS 	GENERAL TOLERANCES (UNLESS SPECIFIED) mm INCH		DIMENSION STYLE MM/IN		SCALE 4:1	DESIGN UNITS INCH	THIRD ANGLE PROJECTION
		4 PLACES ± --- ± --- 3 PLACES ± --- ± .010 2 PLACES ± 0.25 ± --- 1 PLACE ± --- ± ---	DRAWN BY SAMIEC DATE 1985/08/08	CHECKED BY PATEL DATE 1985/08/08	TITLE KK .156 HEADER ASSEMBLY POLARIZING RIGHT ANGLE 2-24 CKTS			
		ANGULAR ±1/2°		APPROVED BY LENZ DATE 1985/08/08	MOLEX INCORPORATED			
		DRAFT WHERE APPLICABLE MUST REMAIN WITHIN DIMENSIONS		MATERIAL NO. SEE CHART	DOCUMENT NO. SD-41682-001	SHEET NO. 1 OF *		

ENG. NO: A-41682-ANA102-*				ENG. NO: A-41682-BNF208-*			
PIN NUMBER		2161-19(102)		PIN NUMBER		43294-0497	
PLATING		102		PLATING		208	
DIM. L		(26.21)/1.032		DIM. L		(26.16)/1.030	
DIM. X		(11.43)/.450		DIM. X		(11.43)/.450	
DIM. G (GOLD)		N/A		DIM. G (GOLD)		(6.86)/.270	
DIM. Y		(3.73)/.147		DIM. Y		(3.68)/.145	
DIM. Z		(5.26)/.207		DIM. Z		(5.26)/.207	
DIM. T (TIN)		OVERALL		DIM. T (TIN)		(5.08)/.200	
ANG. W		90°		ANG. W		90°	
PACKAGING		PK-41682-001 (BULK)		PACKAGING		PK-41682-001 (BULK)	
CKTS	EDP NO.	ENG. NO.	VOIDS	CKTS	EDP NO.	ENG. NO.	VOIDS
02	26-48-1024	A-41682-A2A102		05	26-50-6050	A-41682-A5A102-51	2,4
03	26-48-1034	A-41682-A3A102		05	26-50-6051	A-41682-A5A102-2	2
04	26-48-1044	A-41682-A4A102		05	26-50-6052	A-41682-A5A102-4	4
05	26-48-1054	A-41682-A5A102		06	26-50-6063	A-41682-A6A102-3	3
06	26-48-1064	A-41682-A6A102		06	26-50-6064	A-41682-A6A102-4	4
07	26-48-1074	A-41682-A7A102		07	26-50-6076	A-41682-A7A102-6	6
08	26-48-1084	A-41682-A8A102		10	26-50-6103	A-41682-A10A102-3	3
09	26-48-1094	A-41682-A9A102		10	26-50-6108	A-41682-A10A102-8	8
10	26-48-1104	A-41682-A10A102		14	26-50-6140	A-41682-A14A102-12	12
11	26-48-1114	A-41682-A11A102		15	26-50-6154	A-41682-A15A102-4	4
12	26-48-1124	A-41682-A12A102		16	26-50-6161	A-41682-A16A102-10	10
13	26-48-1134	A-41682-A13A102		16	26-50-6166	A-41682-A16A102-6	6
14	26-48-1144	A-41682-A14A102		18	26-50-6181	A-41682-A18A102-51	5,7,9,11
15	26-48-1154	A-41682-A15A102		24	26-50-6241	A-41682-A24A102-51	5,13
16	26-48-1164	A-41682-A16A102					
17	26-48-1174	A-41682-A17A102					
18	26-48-1184	A-41682-A18A102					
19	26-48-1194	A-41682-A19A102					
20	26-48-1204	A-41682-A20A102					
21	26-48-1214	A-41682-A21A102					
22	26-48-1224	A-41682-A22A102					
23	26-48-1234	A-41682-A23A102					
24	26-48-1244	A-41682-A24A102					

REV: AF1	<u>ECR/ECN INFORMATION</u>	TITLE: KK .156 HEADER ASSEMBLY POLARIZING RIGHT ANGLE 2-24 CKTS	<u>SHEET No.</u> - 2 -
	EC No: UCP2007-2134		
	DATE: 3/5/2007		
<u>DOCUMENT NUMBER:</u> SD-41682-001	<u>CREATED / REVISED BY:</u> ADERR	<u>CHECKED BY:</u> LSCHMIDT	<u>APPROVED BY:</u> FSMITH

ENG. NO: A-41682-BNF228-*				ENG. NO: A-41682-ANA501-*				ENG. NO: A-41682-ANB102-*			
PIN NUMBER		43294-0498		PIN NUMBER		2161-19(501)		PIN NUMBER		2161-19(102)	
PLATING		228		PLATING		501		PLATING		102	
DIM. L		(26.16)/1.030		DIM. L		(26.21)/1.032		DIM. L		(26.21)/1.032	
DIM. X		(11.43)/.450		DIM. X		(11.43)/.450		DIM. X		(12.95)/.510	
DIM. G (GOLD)		(6.86)/.270		DIM. G (GOLD)		OVERALL		DIM. G (GOLD)		N/A	
DIM. Y		(3.68)/.145		DIM. Y		(3.73)/.147		DIM. Y		(3.73)/.147	
DIM. Z		(5.26)/.207		DIM. Z		(5.26)/.207		DIM. Z		(3.76)/.148	
DIM. T (TIN)		(5.08)/.200		DIM. T (TIN)		N/A		DIM. T (TIN)		OVERALL	
ANG. W		90°		ANG. W		90°		ANG. W		90°	
PACKAGING		PK-41682-001 (BULK)		PACKAGING		PK-41682-001 (BULK)		PACKAGING		PK-41682-001 (BULK)	
CKTS	EDP NO.	ENG. NO.	VOIDS	CKTS	EDP NO.	ENG. NO.	VOIDS	CKTS	EDP NO.	ENG. NO.	VOIDS
02	41682-0024	A-41682-B02F228		02	26-48-2024	A-41682-A2A501		02	41682-0047	A-41682-A2B102	
03	41682-0025	A-41682-B03F228		03	26-48-2034	A-41682-A3A501		03	41682-0048	A-41682-A3B102	
04	41682-0026	A-41682-B04F228		04	26-48-2044	A-41682-A4A501		04	26-48-6046	A-41682-A4B102	
05	41682-0027	A-41682-B05F228		05	26-48-2054	A-41682-A5A501		05	41682-0049	A-41682-A5B102	
06	41682-0028	A-41682-B06F228		06	26-48-2064	A-41682-A6A501		06	41682-0050	A-41682-A6B102	
07	41682-0029	A-41682-B07F228		07	26-48-2074	A-41682-A7A501		07	41682-0051	A-41682-A7B102	
08	41682-0030	A-41682-B08F228		08	26-48-2084	A-41682-A8A501		08	41682-0052	A-41682-A8B102	
09	41682-0031	A-41682-B09F228		09	26-48-2094	A-41682-A9A501		09	41682-0053	A-41682-A9B102	
10	41682-0032	A-41682-B10F228		10	26-48-2104	A-41682-A10A501		10	26-48-6106	A-41682-A10B102	
11	41682-0033	A-41682-B11F228		11	26-48-2114	A-41682-A11A501		11	41682-0054	A-41682-A11B102	
12	41682-0034	A-41682-B12F228		12	26-48-2124	A-41682-A12A501		12	41682-0055	A-41682-A12B102	
13	41682-0035	A-41682-B13F228		13	26-48-2134	A-41682-A13A501		13	41682-0056	A-41682-A13B102	
14	41682-0036	A-41682-B14F228		14	26-48-2144	A-41682-A14A501		14	41682-0057	A-41682-A14B102	
15	41682-0037	A-41682-B15F228		15	26-48-2154	A-41682-A15A501		15	41682-0058	A-41682-A15B102	
16	41682-0038	A-41682-B16F228		16	26-48-2164	A-41682-A16A501		16	41682-0059	A-41682-A16B102	
17	41682-0039	A-41682-B17F228		17	26-48-2174	A-41682-A17A501		17	41682-0060	A-41682-A17B102	
18	41682-0040	A-41682-B18F228		18	26-48-2184	A-41682-A18A501		18	41682-0061	A-41682-A18B102	
19	41682-0041	A-41682-B19F228		19	26-48-2194	A-41682-A19A501		19	41682-0062	A-41682-A19B102	
20	41682-0042	A-41682-B20F228		20	26-48-2204	A-41682-A20A501		20	41682-0063	A-41682-A20B102	
21	41682-0043	A-41682-B21F228		21	26-48-2214	A-41682-A21A501		21	41682-0064	A-41682-A21B102	
22	41682-0044	A-41682-B22F228		22	26-48-2224	A-41682-A22A501		22	41682-0065	A-41682-A22B102	
23	41682-0045	A-41682-B23F228		23	26-48-2234	A-41682-A23A501		23	41682-0066	A-41682-A23B102	
24	41682-0046	A-41682-B24F228		24	26-48-2244	A-41682-A24A501		24	26-48-6246	A-41682-A24B102	

REV: AF1	<u>ECR/ECN INFORMATION</u>	TITLE: KK .156 HEADER ASSEMBLY POLARIZING RIGHT ANGLE 2-24 CKTS	SHEET No. - 3 -
	<u>EC No:</u> UCP2007-2134		
	<u>DATE:</u> 3/5/2007		
<u>DOCUMENT NUMBER:</u> SD-41682-001	<u>CREATED / REVISED BY:</u> ADERR	<u>CHECKED BY:</u> LSCHMIDT	<u>APPROVED BY:</u> FSMITH

ENG. NO: A-41682-ANA122*				ENG. NO: A-41682-ANC102*				ENG. NO: A-41682-ANE102*			
PIN NUMBER		2161-19(122)		PIN NUMBER		2161-62(102)		PIN NUMBER		2161-63(102)	
PLATING		122		PLATING		102		PLATING		102	
DIM. L		(26.21)/1.032		DIM. L		(24.87)/.980		DIM. L		(24.38)/.960	
DIM. X		(11.43)/.450		DIM. X		(11.43)/.450		DIM. X		(11.17)/.440	
DIM. G (GOLD)		N/A		DIM. G (GOLD)		N/A		DIM. G (GOLD)		N/A	
DIM. Y		(3.73)/.147		DIM. Y		(3.18)/.125		DIM. Y		(3.73)/.147	
DIM. Z		(5.26)/.207		DIM. Z		(4.52)/.178		DIM. Z		(3.66)/.144	
DIM. T (TIN)		OVERALL		DIM. T (TIN)		OVERALL		DIM. T (TIN)		OVERALL	
ANG. W		90°		ANG. W		90°		ANG. W		90°	
PACKAGING		PK-41682-001 (BULK)		PACKAGING		PK-41682-001 (BULK)		PACKAGING		PK-41682-001 (BULK)	
CKTS	EDP NO.	ENG. NO.	VOIDS	CKTS	EDP NO.	ENG. NO.	VOIDS	CKTS	EDP NO.	ENG. NO.	VOIDS
02	26-48-1028	A-41682-A2A122		02	41682-0088	A-41682-A2C102		02	41682-0110	A-41682-A2E102	
03	26-48-1038	A-41682-A3A122		03	26-48-7036	A-41682-A3C102		03	26-48-6033	A-41682-A3E102	
04	41682-0067	A-41682-A4A122		04	41682-0089	A-41682-A4C102		04	41682-0111	A-41682-A4E102	
05	41682-0068	A-41682-A5A122		05	41682-0090	A-41682-A5C102		05	41682-0112	A-41682-A5E102	
06	41682-0069	A-41682-A6A122		06	41682-0091	A-41682-A6C102		06	41682-0113	A-41682-A6E102	
07	41682-0070	A-41682-A7A122		07	41682-0092	A-41682-A7C102		07	41682-0114	A-41682-A7E102	
08	41682-0071	A-41682-A8A122		08	41682-0093	A-41682-A8C102		08	41682-0115	A-41682-A8E102	
09	41682-0072	A-41682-A9A122		09	41682-0094	A-41682-A9C102		09	41682-0116	A-41682-A9E102	
10	41682-0073	A-41682-A10A122		10	41682-0095	A-41682-A10C102		10	41682-0117	A-41682-A10E102	
11	41682-0074	A-41682-A11A122		11	41682-0096	A-41682-A11C102		11	41682-0118	A-41682-A11E102	
12	41682-0075	A-41682-A12A122		12	41682-0097	A-41682-A12C102		12	41682-0119	A-41682-A12E102	
13	41682-0076	A-41682-A13A122		13	41682-0098	A-41682-A13C102		13	41682-0120	A-41682-A13E102	
14	41682-0077	A-41682-A14A122		14	41682-0099	A-41682-A14C102		14	41682-0121	A-41682-A14E102	
15	41682-0078	A-41682-A15A122		15	41682-0100	A-41682-A15C102		15	26-48-6153	A-41682-A15E102	
16	41682-0079	A-41682-A16A122		16	41682-0101	A-41682-A16C102		16	41682-0122	A-41682-A16E102	
17	41682-0080	A-41682-A17A122		17	41682-0102	A-41682-A17C102		17	41682-0123	A-41682-A17E102	
18	41682-0081	A-41682-A18A122		18	41682-0103	A-41682-A18C102		18	41682-0124	A-41682-A18E102	
19	41682-0082	A-41682-A19A122		19	41682-0104	A-41682-A19C102		19	41682-0125	A-41682-A19E102	
20	41682-0083	A-41682-A20A122		20	41682-0105	A-41682-A20C102		20	41682-0126	A-41682-A20E102	
21	41682-0084	A-41682-A21A122		21	41682-0106	A-41682-A21C102		21	41682-0127	A-41682-A21E102	
22	41682-0085	A-41682-A22A122		22	41682-0107	A-41682-A22C102		22	41682-0128	A-41682-A22E102	
23	41682-0086	A-41682-A23A122		23	41682-0108	A-41682-A23C102		23	41682-0129	A-41682-A23E102	
24	41682-0087	A-41682-A24A122		24	41682-0109	A-41682-A24C102		24	41682-0130	A-41682-A24E102	

REV: AF1	<u>ECR/ECN INFORMATION</u>		TITLE: KK .156 HEADER ASSEMBLY POLARIZING RIGHT ANGLE 2-24 CKTS	SHEET No. - 4 -
	EC No: UCP2007-2134			
	DATE: 3/5/2007			
<u>DOCUMENT NUMBER:</u> SD-41682-001		<u>CREATED / REVISED BY:</u> ADERR	<u>CHECKED BY:</u> LSCHMIDT	<u>APPROVED BY:</u> FSMITH

ENG. NO: A-41682-ANF102-*				ENG. NO: A-41682-ANB501-*				ENG. NO:			
PIN NUMBER		2161-63(102)		PIN NUMBER		2161-19(501)		PIN NUMBER			
PLATING		102		PLATING		501		PLATING			
DIM. L		(24.38)/.960		DIM. L		(26.21)/1.032		DIM. L			
DIM. X		(11.43)/.450		DIM. X		(12.95)/.510		DIM. X			
DIM. G (GOLD)		N/A		DIM. G (GOLD)		OVERALL		DIM. G (GOLD)			
DIM. Y		(3.73)/.147		DIM. Y		(3.73)/.147		DIM. Y			
DIM. Z		(3.40)/.134		DIM. Z		(3.76)/.148		DIM. Z			
DIM. T (TIN)		OVERALL		DIM. T (TIN)		N/A		DIM. T (TIN)			
ANG. W		90°		ANG. W		90°		ANG. W			
PACKAGING		PK-41682-001 (BULK)		PACKAGING		PK-41682-001 (BULK)		PACKAGING			
CKTS	EDP NO.	ENG. NO.	VOIDS	CKTS	EDP NO.	ENG. NO.	VOIDS	CKTS	EDP NO.	ENG. NO.	VOIDS
02	26-48-5025	A-41682-A2F102		02				02			
03	26-48-5035	A-41682-A3F102		03				03			
04	26-48-5045	A-41682-A4F102		04				04			
05	26-48-5055	A-41682-A5F102		05				05			
06	26-48-5065	A-41682-A6F102		06				06			
07	26-48-5075	A-41682-A7F102		07				07			
08	26-48-5085	A-41682-A8F102		08				08			
09	26-48-5095	A-41682-A9F102		09				09			
10	26-48-5105	A-41682-A10F102		10				10			
11	26-48-5115	A-41682-A11F102		11				11			
12	26-48-5125	A-41682-A12F102		12				12			
13	26-48-5135	A-41682-A13F102		13				13			
14	26-48-5145	A-41682-A14F102		14				14			
15	26-48-5155	A-41682-A15F102		15				15			
16	26-48-5165	A-41682-A16F102		16				16			
17	26-48-5175	A-41682-A17F102		17				17			
18	26-48-5185	A-41682-A18F102		18				18			
19	26-48-5195	A-41682-A19F102		19				19			
20	26-48-5205	A-41682-A20F102		20				20			
21	26-48-5215	A-41682-A21F102		21				21			
22	26-48-5225	A-41682-A22F102		22				22			
23	26-48-5235	A-41682-A23F102		23				23			
24	26-48-5246	A-41682-A24F102		24	41682-0153	A-41682-A24B501		24			
20	26-48-5203	A-41682-A20F102-17	17								

REV: AF1	<u>ECR/ECN INFORMATION</u>		TITLE: KK .156 HEADER ASSEMBLY POLARIZING RIGHT ANGLE 2-24 CKTS	<u>SHEET No.</u> - 5 -
	EC No: UCP2007-2134			
	DATE: 3/5/2007			
<u>DOCUMENT NUMBER:</u> SD-41682-001		<u>CREATED / REVISED BY:</u> ADERR	<u>CHECKED BY:</u> LSCHMIDT	<u>APPROVED BY:</u> FSMITH